



# GEO

# SUBMERSIBLE DRAINAGE PUMP

## Durable Design and Features

The motor and pump body are made of rigid cast iron for durability. A high-pressure-resistant mechanical seal increases submersion depth.

The semi-open high chrome alloy impeller with a ductile iron wear plate ensures durability. Motor cooling is optimized through an integrated discharge channel.

The top outlet design saves space.

- Discharge sizes: 50mm (2") to 150mm (6").
- Motor power: 1.5kW (2HP) to 15kW (20HP).

The motor is hermetically sealed with built-in thermal protection for motors below 15kW.

## Applications

- Civil engineering and construction works
- Mines, quarries, coal ore & slurries
- Sewage treatment plants
- General pumping purposes

## Specifications

- **Capacity:** up to 160m<sup>3</sup>/h
- **Head:** up to 57 meters
- **Power:** 1.5kw (2HP) to 15kW (20HP)
- **Power supply:** three phase 400V ± 10%, 50Hz
- **Insulation Class:** F 380V ± 10%, 60Hz
- **protection Class:** IP68
- **Cable length:** 8m
- **water temperature:** up to 40 °C
- **Max. water depth:** 25m



## Special features on request

- Other Voltages
- The length of cable is optional



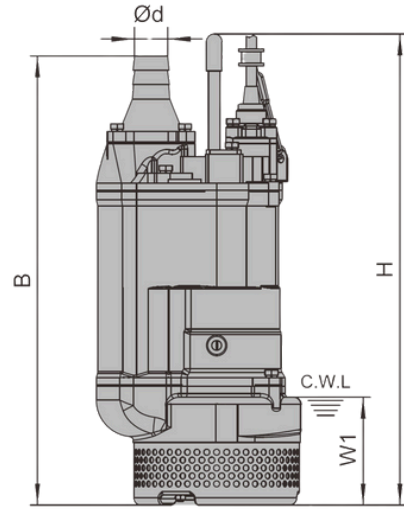
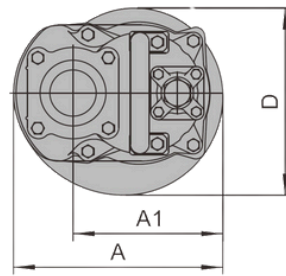
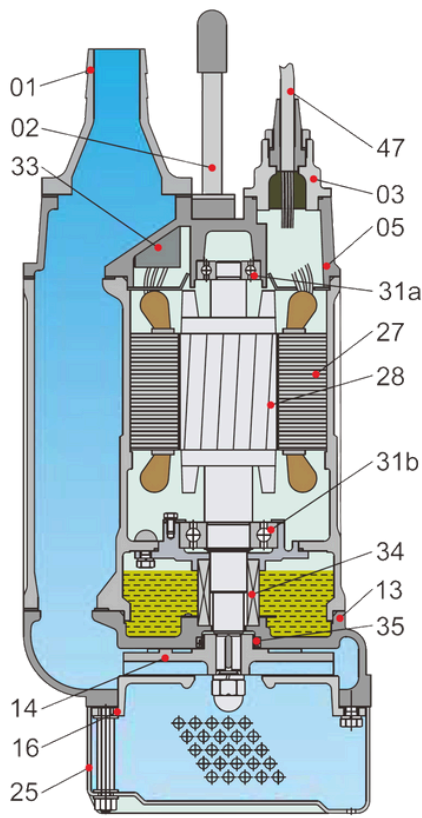
Authorized Distributor:  
MOHAMMED AHMED AL-AWANI TRADING COMPANY

MASTCOSA DELIVERING SOLUTIONS Dewatering Pump Sales | Dewatering Accessories | Hoses & Fittings | Pump Parts | Pump Rental | Pump Service

E-mail: [sales@mastcosa.com](mailto:sales@mastcosa.com)  
[www.mastcosa.com](http://www.mastcosa.com)

Building No. 3192 - King Saud Street - Al  
Amarah District Dammam - Zip Code  
32415 - Additional No7068 - Unit No 73

Phone Number: +966 13 833 4575 +966  
13 833 5156



W1:Continuous running water level

## Material of construction

Item No.	Part Name	Material	Item No.	Part Name	Material
01	Hose coupling	Cast iron	28	Rotor	Shaft:AISI420SS
02	handle	Rubber & Steel	31a	Bearing	Ball bearing
05	Upper cover	Cast iron	31b	Bearing	Ball bearing
11	Motor body	Cast iron	33	Motor protector	
13	Pump body	Cast iron	34	Mechanical seal	Sic-Sic/Carbon-Sic( ≤ 2.2kW) Sic-Sic/ Sic-Sic ( ≥ 3.7kW)
14	Impeller	High chrome alloy	35	Oil seal	
16	Inlet plate	Ductile iron	47	cable	
25	Strainer	Steel			
27	Stator				

## Dimensions & Weights

Model (50/60Hz)	d	A	A1	B	D	H	W1	N. W	G. W	Packing Dimension
	mm	mm	mm	mm	mm	mm	mm	Kg	Kg	mm
KBZ 21.5	50	235	173	535	216	505	120	36	40	610x265x265
KBZ 31.5	80	235	173	535	216	505	120	36	40	610x265x265
KBZ 22.2	50	235	173	535	216	505	120	39	43	610x265x265
KBZ 32.2	80	235	173	535	216	505	120	39	43	610x265x265
KBZ 23.7	50	283	208	628	252	629	150	63	68	710x320x295
KBZ 33.7	80	283	208	628	252	629	150	63	68	710x320x295
KBZ 43.7	100	283	208	642	252	629	150	63	68	710x320x295
KBZ 35.5	80	283	208	671	252	590	150	77	84	750x350x360
KBZ 45.5	100	283	208	686	252	590	150	77	84	750x350x360
KBZ 47.5	100	330	240	764	314	676	190	106	116	835x365x385
KBZ 67.5	150	330	240	790	314	676	190	108	119	865x365x385
KBZ 411	100	373	255	807	350	695	190	136	148	885x415x385
KBZ 611	150	373	255	807	350	695	190	139	150	885x415x385
KBZ 415	100	373	255	842	350	755	190	144	158	935x415x385
KBZ 615	150	373	255	842	350	755	190	146	160	935x415x385



**Authorized Distributor:**

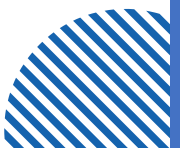
**MOHAMMED AHMED AL-AWANI TRADING COMPANY**

**MASTCOSA** - DELIVERING SOLUTIONS | Dewatering Pump Sales | Dewatering Accessories | Hoses & Fittings | Pump Parts | Pump Rental | Pump Service

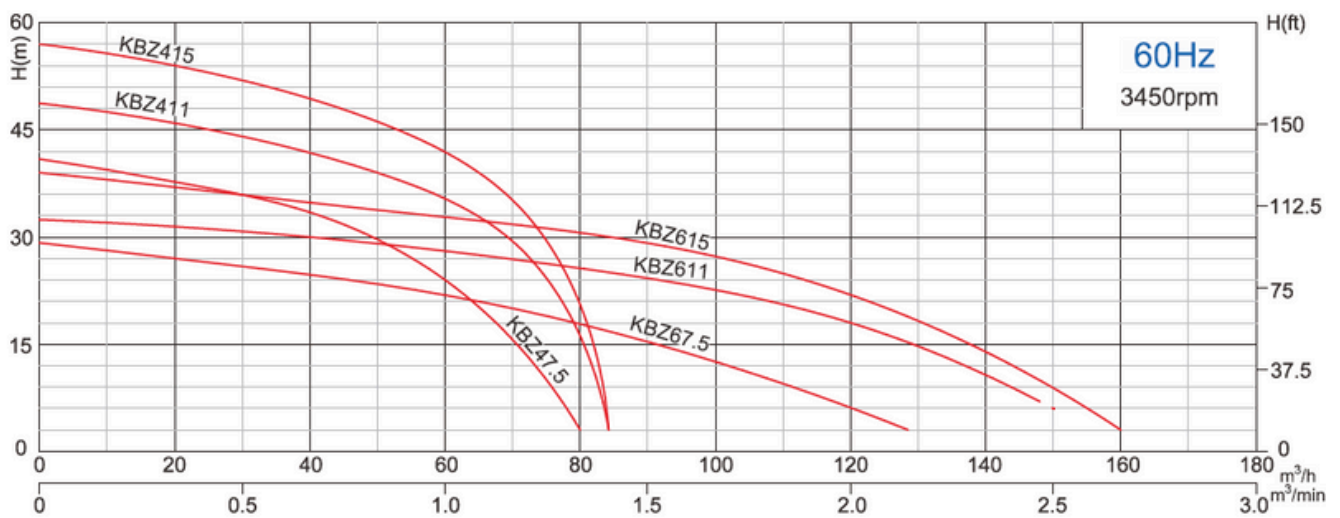
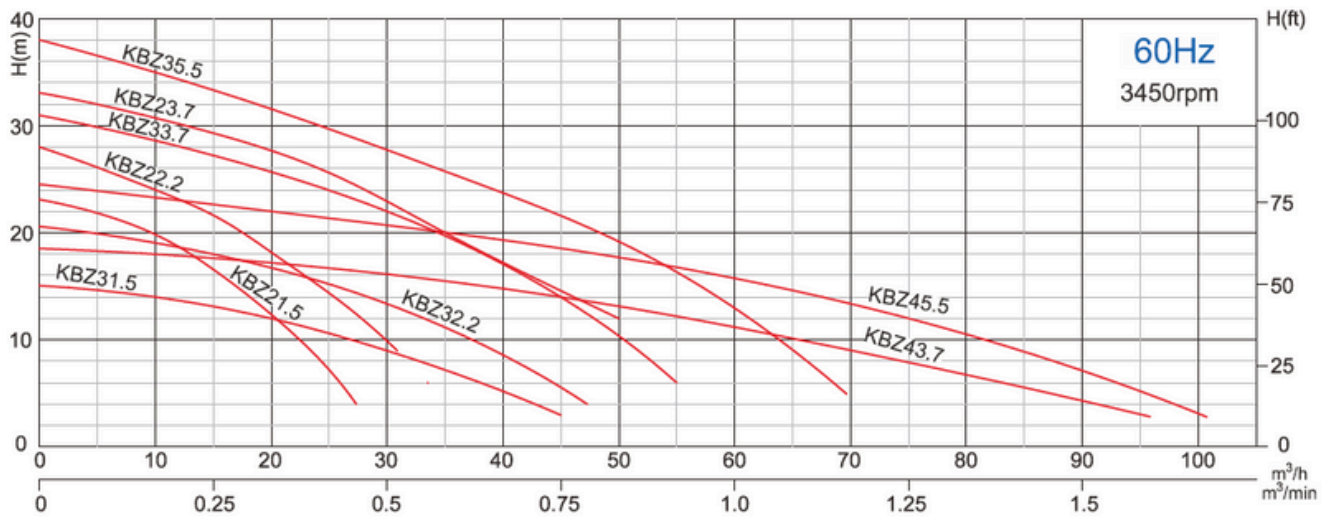
✉ E-mail: [sales@mastcosa.com](mailto:sales@mastcosa.com)  
[www.mastcosa.com](http://www.mastcosa.com)

📍 Building No. 3192 - King Saud Street - Al  
Amarah District Dammam - Zip Code  
32415 - Additional No7068 - Unit No 73

☎ Phone Number: +966 13 833 4575 +966  
13 833 5156



## Performance curves

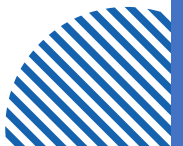


## Performance table

Model (60Hz)	A	Motor power		Rated current (400V)	Rated capacity		Rated Head	Max capacity		Max Head	Impeller Passage
	mm	kW	HP	A	m³/h	m³/min	m	m³/h	m³/min	m	mm
KBZ 21.5	50	1.5	2	3.5	15	0.25	16.5	27	0.45	23	8.5
KBZ 31.5	80	1.5	2	3.5	30	0.50	9	45	0.75	15	8.5
KBZ 22.2	50	2.2	3	5.1	18	0.30	20	31	0.52	28	8.5
KBZ 32.2	80	2.2	3	5.1	30	0.60	13	47	0.78	20.5	8.5
KBZ 23.7	50	3.7	5	8.0	12	0.20	30	50	0.83	33	8.5
KBZ 33.7	80	3.7	5	8.0	30	0.50	22	55	0.92	31	8.5
KBZ 43.7	100	3.7	5	8.0	60	1.0	11.5	96	1.60	18.5	8.5
KBZ 35.5	80	5.5	7.5	11.6	36	0.60	25	69	1.15	38	8.5
KBZ 45.5	100	5.5	7.5	11.6	60	1.0	16	102	1.70	24.4	8.5
KBZ 47.5	100	7.5	10	15.4	48	0.80	30	80	1.33	41	11.5
KBZ 67.5	150	7.5	10	15.4	90	1.60	15	127	2.12	31	19.5
KBZ 411	100	11	15	22.5	60	1.0	35	84	1.40	48.5	11.5
KBZ 611	150	11	15	22.5	102	1.70	22	147	2.45	32	19.5
KBZ 415	100	15	20	30	60	1.0	24	84	1.40	57	11.5
KBZ 615	150	15	20	30	102	1.70	27	160	2.67	39	19.5



Authorized Distributor:  
MOHAMMED AHMED AL-AWANI TRADING COMPANY



MASTCOSA DELIVERING SOLUTIONS Dewatering Pump Sales | Dewatering Accessories | Hoses & Fittings | Pump Parts | Pump Rental | Pump Service

E-mail: [sales@mastcosa.com](mailto:sales@mastcosa.com)  
[www.mastcosa.com](http://www.mastcosa.com)

Building No. 3192 - King Saud Street - Al  
Amarah District Dammam - Zip Code  
32415 - Additional No7068 - Unit No 73

Phone Number: +966 13 833 4575 +966  
13 833 5156