

## MANUAL HYDRAULIC PUMP

01

Which generates hydraulic pressure and flow.

## MALE ADAPTER

02

To connect the system components.

## PRESSURE GAUGE

03

To monitor system pressure.

## GAUGE BLOCK

04

To fix the pressure gauge.

## HYDRAULIC HOSE

05

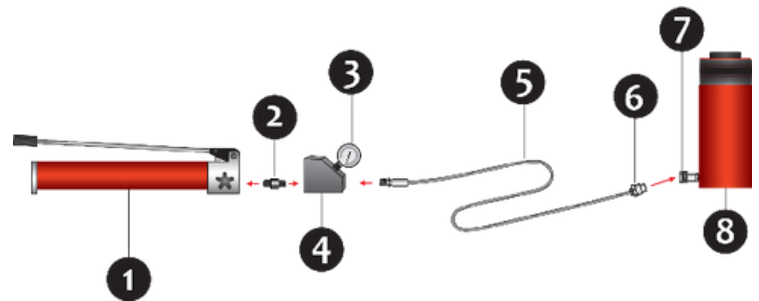
Which carries hydraulic fluid.

## MALE COUPLER

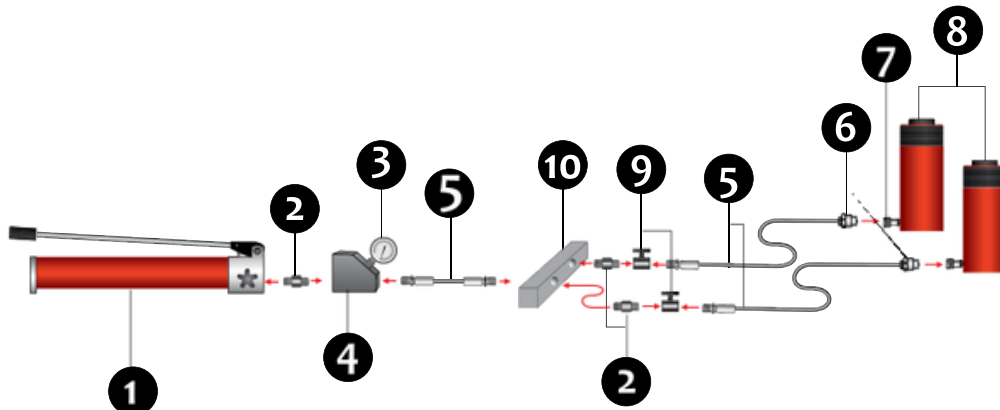
06

For quick connection of the hose to another system components.

### SINGLE ACTING DESIGN CONNECTION ONE POINT LIFTING SETUP



### SINGLE ACTING DESIGN CONNECTION TWO POINT LIFTING SETUP



### FEMALE COUPLER

**07** For quick connection of the hose to another system components.

### HYDRAULIC CYLINDER

**08** Which applies force.

### NEEDLE VALVE

**09** Which controls the flow of hydraulic fluid to or from the system.

### MANIFOLD

**10** which distributes hydraulic fluid to different system from one source.

### LOADING HOLDING VALVE

**11** Which holds the load and controls the flow while retracting.

### ELECTRIC DRIVEN PUMP

**12** Which generates hydraulic pressure and flow.

### DOUBLE ACTING DESIGN CONNECTION LIFTING APPLICATION WITH CONTROLLED RETRACTION

